



# SAW Components

Data Sheet B7806





**SAW Components**

**B7806**

**Low-Loss Filter for Mobile Communication**

**1765,00 MHz**

**Data Sheet**



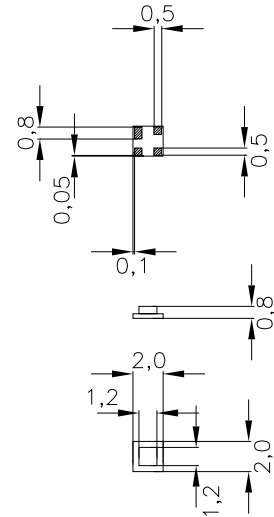
Chip sized SAW package

**Features**

- Low-loss RF filter for mobile telephone Korean PCS systems, transmit path
- Usable passband 30 MHz
- No matching network required for operation at 50 Ω
- Ceramic package for **Surface Mounted technology (SMT)**

**Terminals**

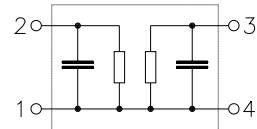
- Ni, gold-plated



Dimensions in mm, approx. weight 0,01 g

**Pin configuration**

- 2 Input
- 1 Input - ground
- 3 Output
- 4 Output - ground



Type	Ordering code	Marking and Package according to	Packing according to
B7806	B39182-B7806-A510	C61157-A7-A63	F61074-V8099-Z000

Electrostatic Sensitive Device (ESD)

**Maximum ratings**

Operable temperature range	$T$	- 30/+ 85	°C	CDMA signal
Storage temperature range	$T_{stg}$	- 40/+ 85	°C	
DC voltage	$V_{DC}$	0	V	
Input power max.	$P_{IN}$	10	dBm	



**Characteristics**

Operating temperature range:  $T = +25 \pm 2^\circ\text{C}$   
 Terminating source impedance:  $Z_S = 50 \Omega$   
 Terminating load impedance:  $Z_L = 50 \Omega$

			min.	typ.	max.	
<b>Center frequency</b>	$f_c$		—	1765,0	—	MHz
<b>Maximum insertion attenuation</b>	$\alpha_{\max}$		—	2,7	3,0	dB
		1750,0 ... 1780,0 MHz				
<b>Amplitude ripple (p-p)</b>	$\Delta\alpha$		—	0,8	1,0	dB
		1750,0 ... 1780,0 MHz				
<b>VSWR</b>			—	1,9	2,0	
		1750,0 ... 1780,0 MHz				
<b>Attenuation</b>	$\alpha$					
		1350,0 ... 1380,0 MHz	26,0	28,0	—	dB
		1660,0 ... 1690,0 MHz	22,0	23,0	—	dB
		1840,0 ... 1870,0 MHz (Rx)	30,0	34,0	—	dB
		2150,0 ... 2180,0 MHz	27,0	29,0	—	dB



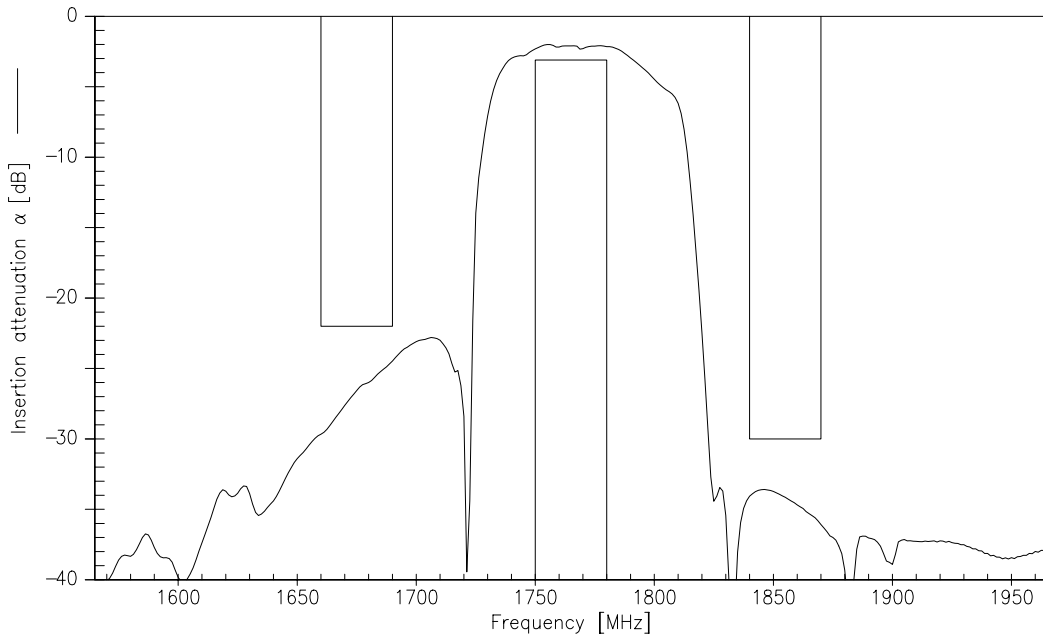
**Characteristics**

Operating temperature range:  $T = -30$  to  $+85^{\circ}\text{C}$   
 Terminating source impedance:  $Z_S = 50\ \Omega$   
 Terminating load impedance:  $Z_L = 50\ \Omega$

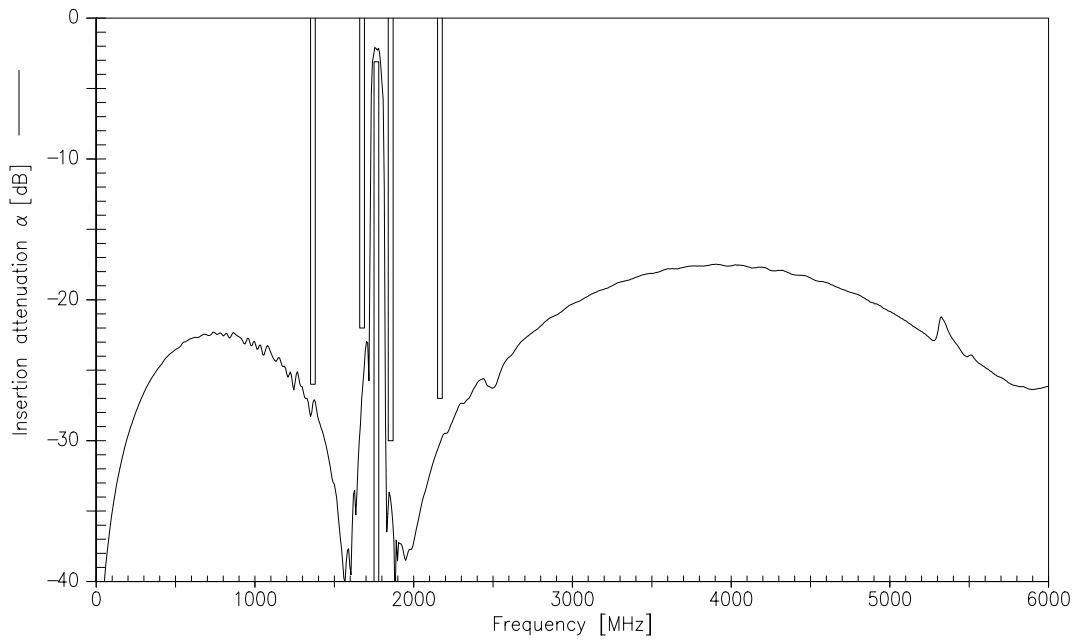
			min.	typ.	max.	
<b>Center frequency</b>	$f_c$		—	1765,0	—	MHz
<b>Maximum insertion attenuation</b>	$\alpha_{\max}$		—	2,7	3,1	dB
		1750,0 ... 1780,0 MHz				
<b>Amplitude ripple (p-p)</b>	$\Delta\alpha$		—	0,8	1,1	dB
		1750,0 ... 1780,0 MHz				
<b>VSWR</b>			—	1,9	2,1	
		1750,0 ... 1780,0 MHz				
<b>Attenuation</b>	$\alpha$					
		1350,0 ... 1380,0 MHz	26,0	28,0	—	dB
		1660,0 ... 1690,0 MHz	22,0	23,0	—	dB
		1840,0 ... 1870,0 MHz (Rx)	30,0	34,0	—	dB
		2150,0 ... 2180,0 MHz	27,0	29,0	—	dB



Transfer function (25° C spec)



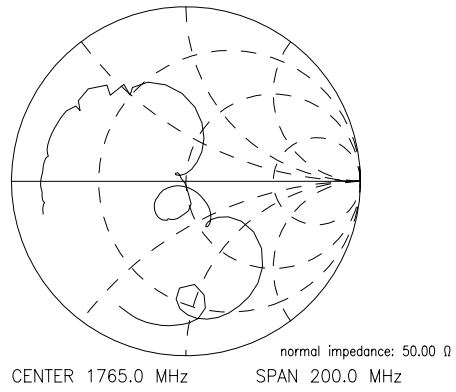
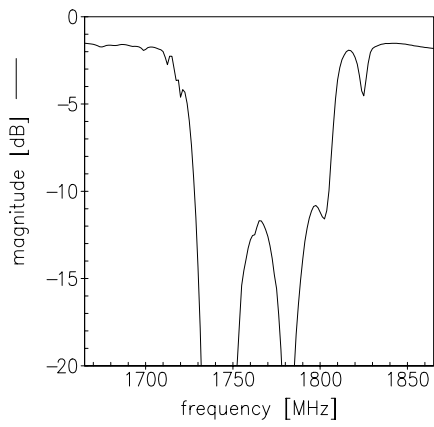
Transfer function (wideband)



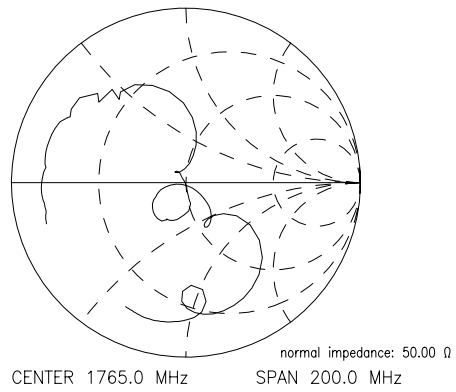
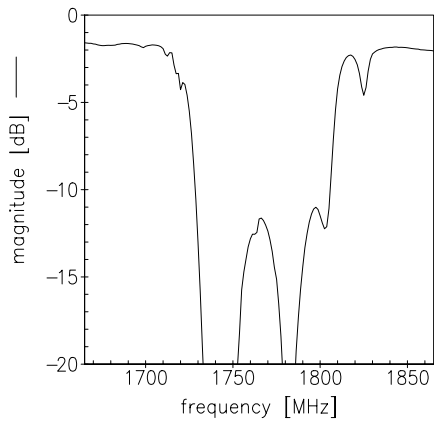


Reflection functions

$S_{11}$



$S_{22}$





**SAW Components**

**B7806**

**Low-Loss Filter for Mobile Communication**

**1765,00 MHz**

Data Sheet



**Published by EPCOS AG**

**Surface Acoustic Wave Components Division, OFW E MF**

**P.O. Box 80 17 09, D-81617 München**

© EPCOS AG 1999. All Rights Reserved.

As far as patents or other rights of third parties are concerned, liability is only assumed for components per se, not for applications, processes and circuits implemented within components or assemblies.

The information describes the type of component and shall not be considered as assured characteristics.

Terms of delivery and rights to change design reserved.

For questions on technology, prices and delivery please contact the sales offices of EPCOS AG or the international representatives.

Due to technical requirements components may contain dangerous substances. For information on the type in question please also contact one of our sales offices.